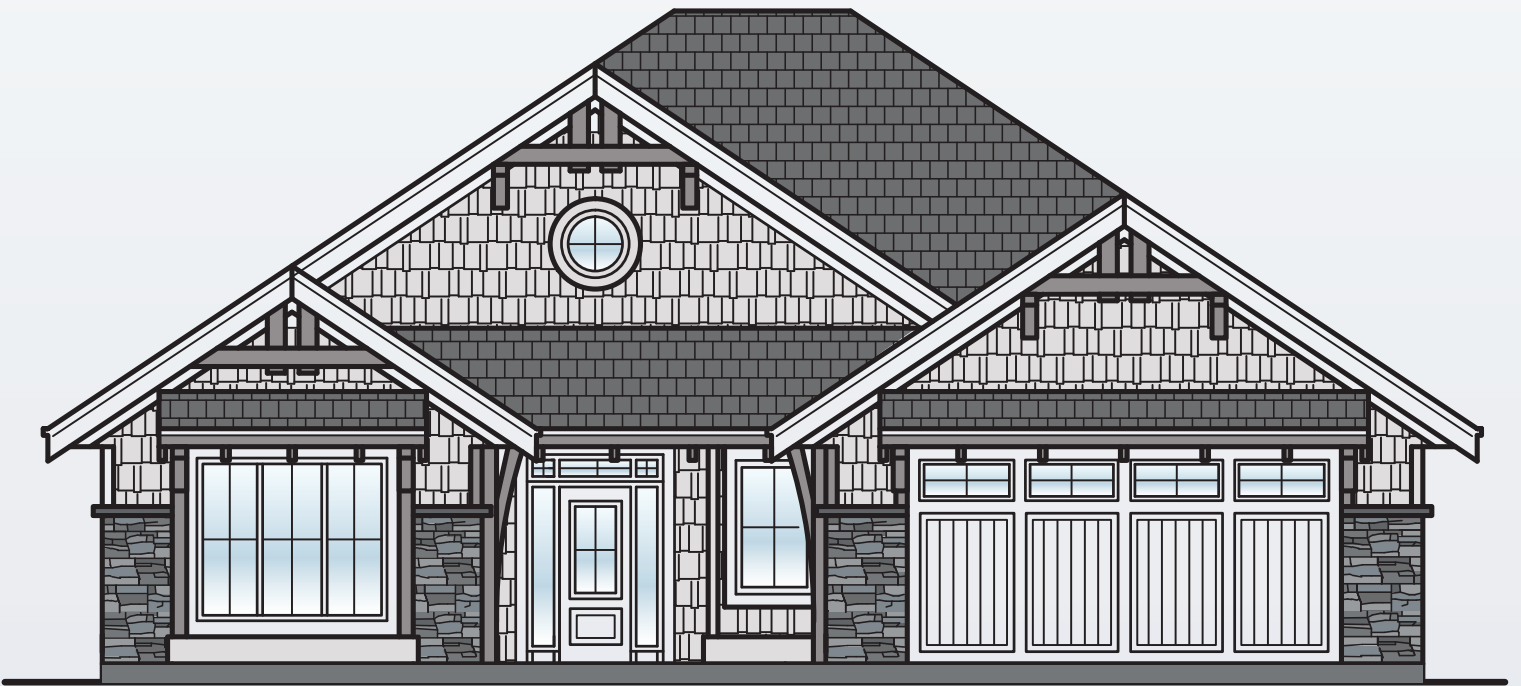


# INTEGRA HOMES

QUALITY HOMES, BUILT ON TRUST.



## 2353 CROWN ISLE DRIVE

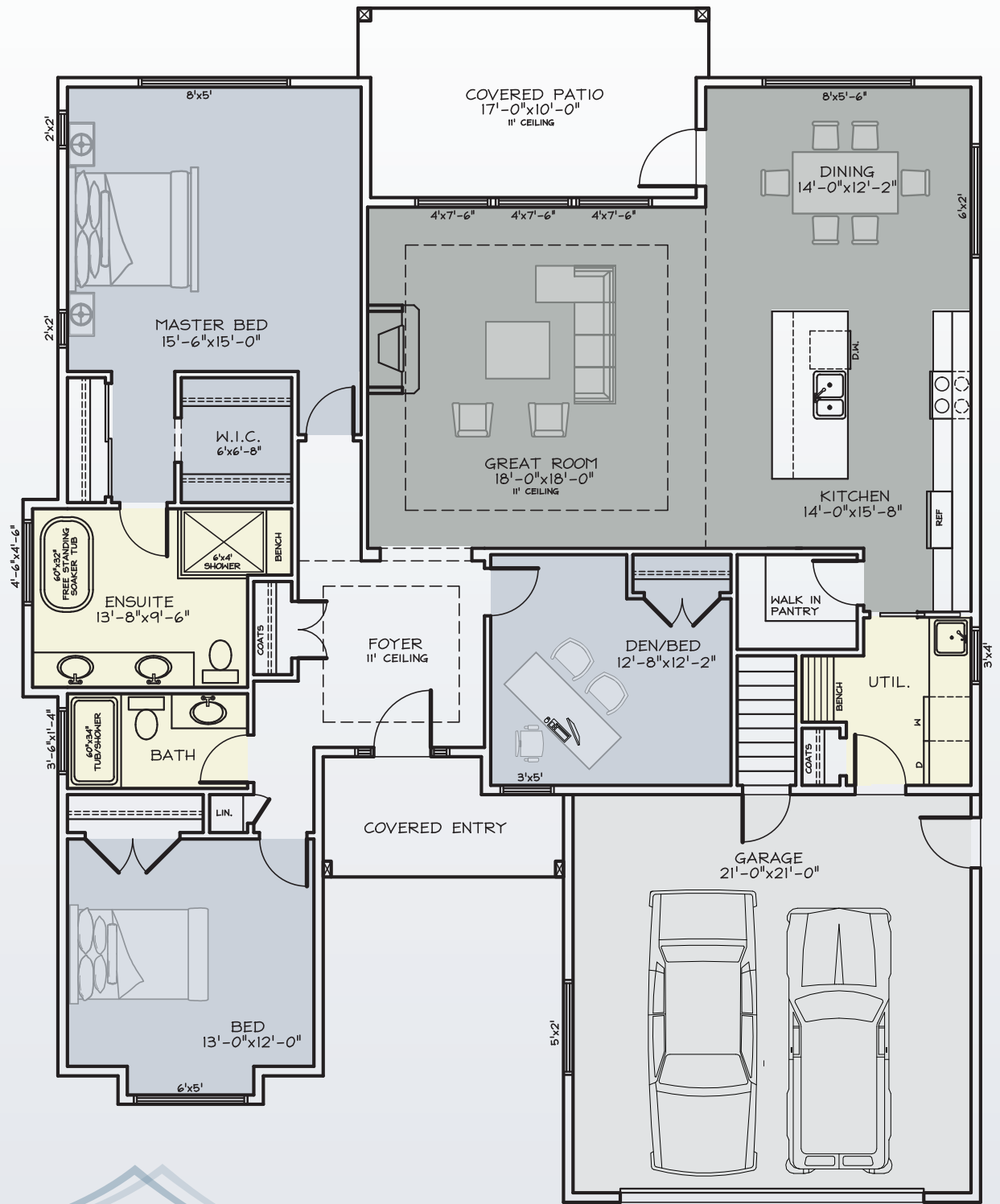
This well designed 1952 square foot rancher is located in the new subdivision of Cambridge Estates in Crown Isle. It has three bedrooms, two washrooms and includes all the high end finishings indicative of Integra Homes! So much to enjoy in this home from the open concept living space, gourmet kitchen , and luxurious master bedroom and ensuite. The landscaping will be complete with amazing curb appeal and covered patio allowing for year round enjoyment.

Call us today for details.

C . 2 5 0 . 3 3 1 . 1 8 7 7

O . 2 5 0 . 3 3 8 . 6 3 1 8

BILL@INTEGRAHOMESCV.CA | WWW.INTEGRAHOMESCV.CA



**MAIN FLOOR PLAN**  
1952 SQ. FT.



C. 250.331.1877

O. 250.338.6318

BILL@INTEGRAHOMESCV.CA | WWW.INTEGRAHOMESCV.CA