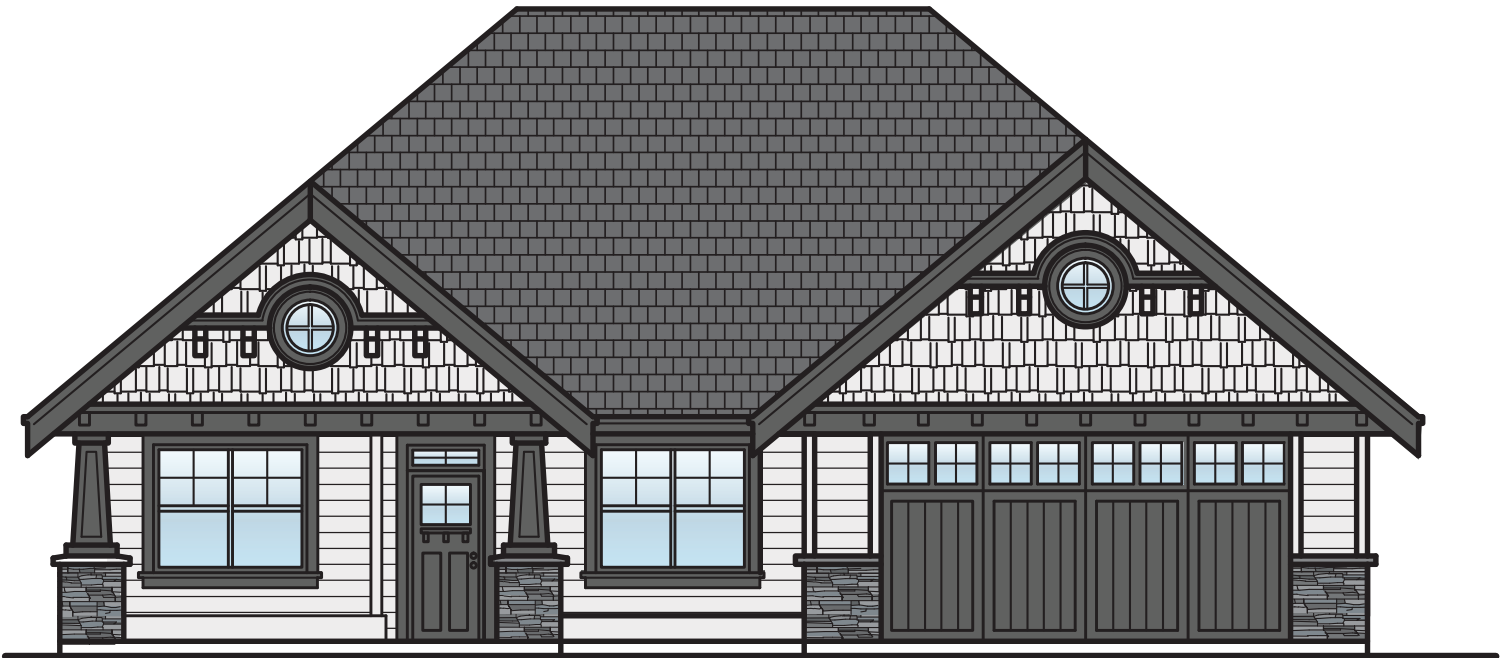


# INTEGRA

H O M E S

QUALITY HOMES, BUILT ON TRUST.



## 2525 CROWN ISLE DRIVE

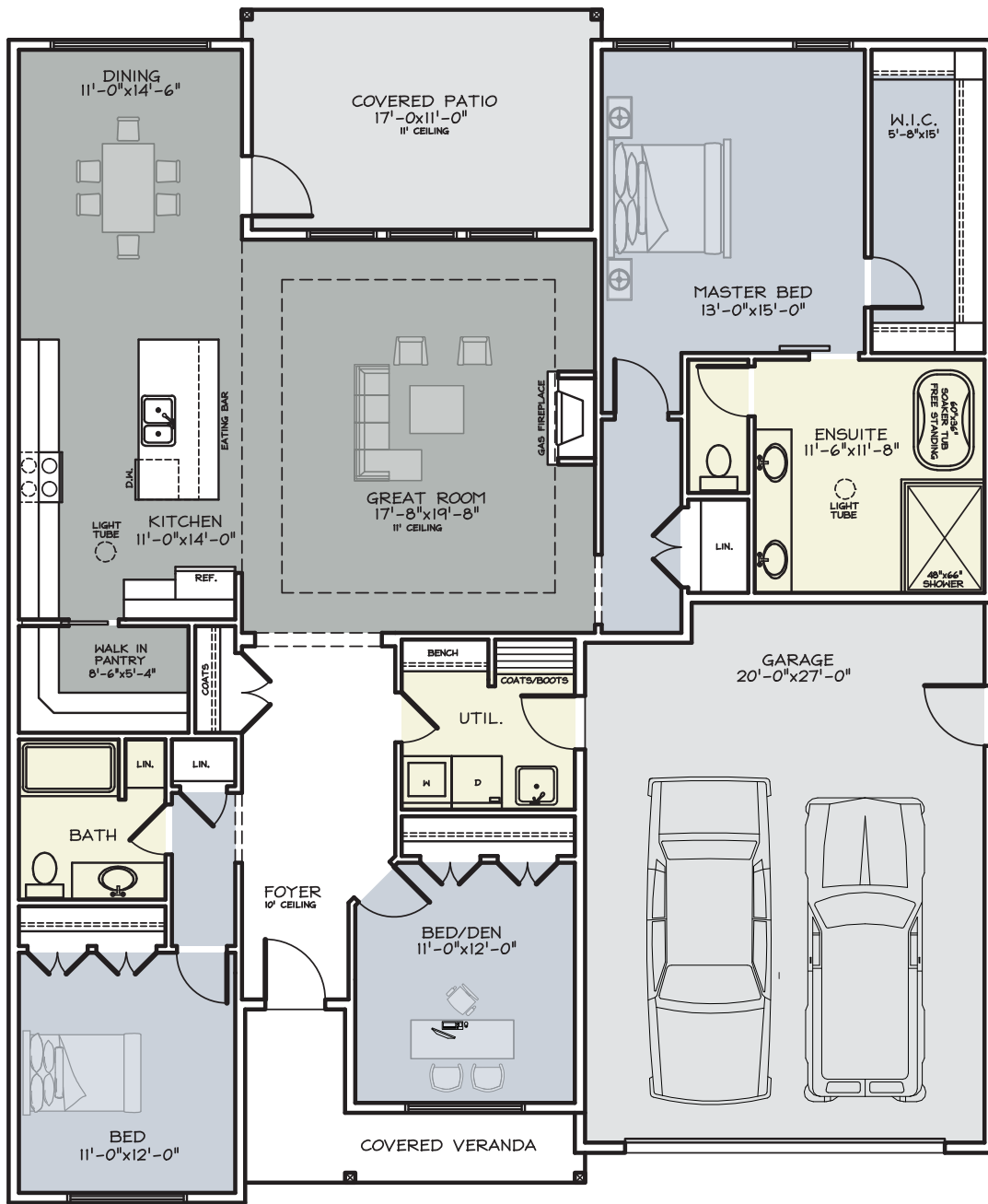
This Home will be an incredible 2000 sf. ft. in the new Cambridge Estates in Crown Isle. This Home has 3 bedroom and 2 baths, a beautiful kitchen with a walk in butlers pantry, a large master bedroom with large walk in closet, and in the ensuite a custom tiled walk in shower and freestanding soaker tub. This home will have all the high end quality finishes that Integra is known for.

Call us today for details.

C . 2 5 0 . 3 3 1 . 1 8 7 7

O . 2 5 0 . 3 3 8 . 6 3 1 8

BILL@INTEGRAHOMESCV.CA | WWW.INTEGRAHOMESCV.CA



**MAIN FLOOR PLAN**

2000 SQ. FT.



C. 250.331.1877

O. 250.338.6318

BILL@INTEGRAHOMESCV.CA | WWW.INTEGRAHOMESCV.CA