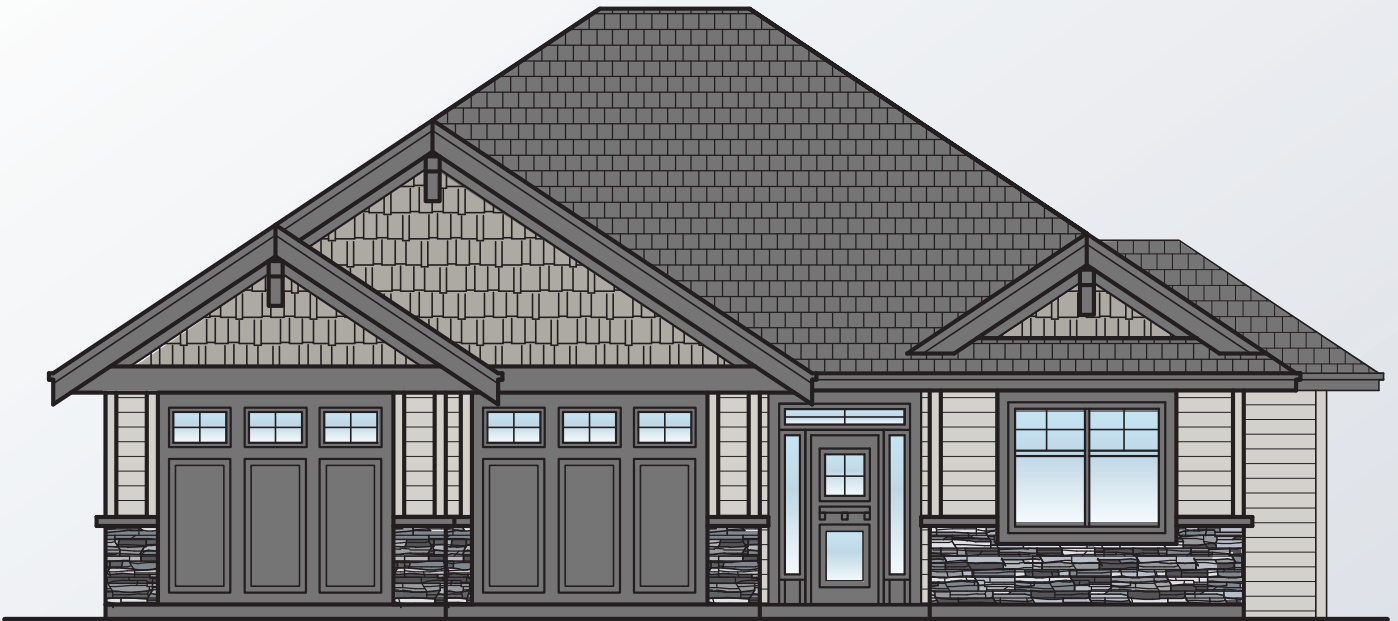


QUALITY HOMES,
BUILT ON TRUST.

INTEGRA
HOMES

710 BIRKDALE



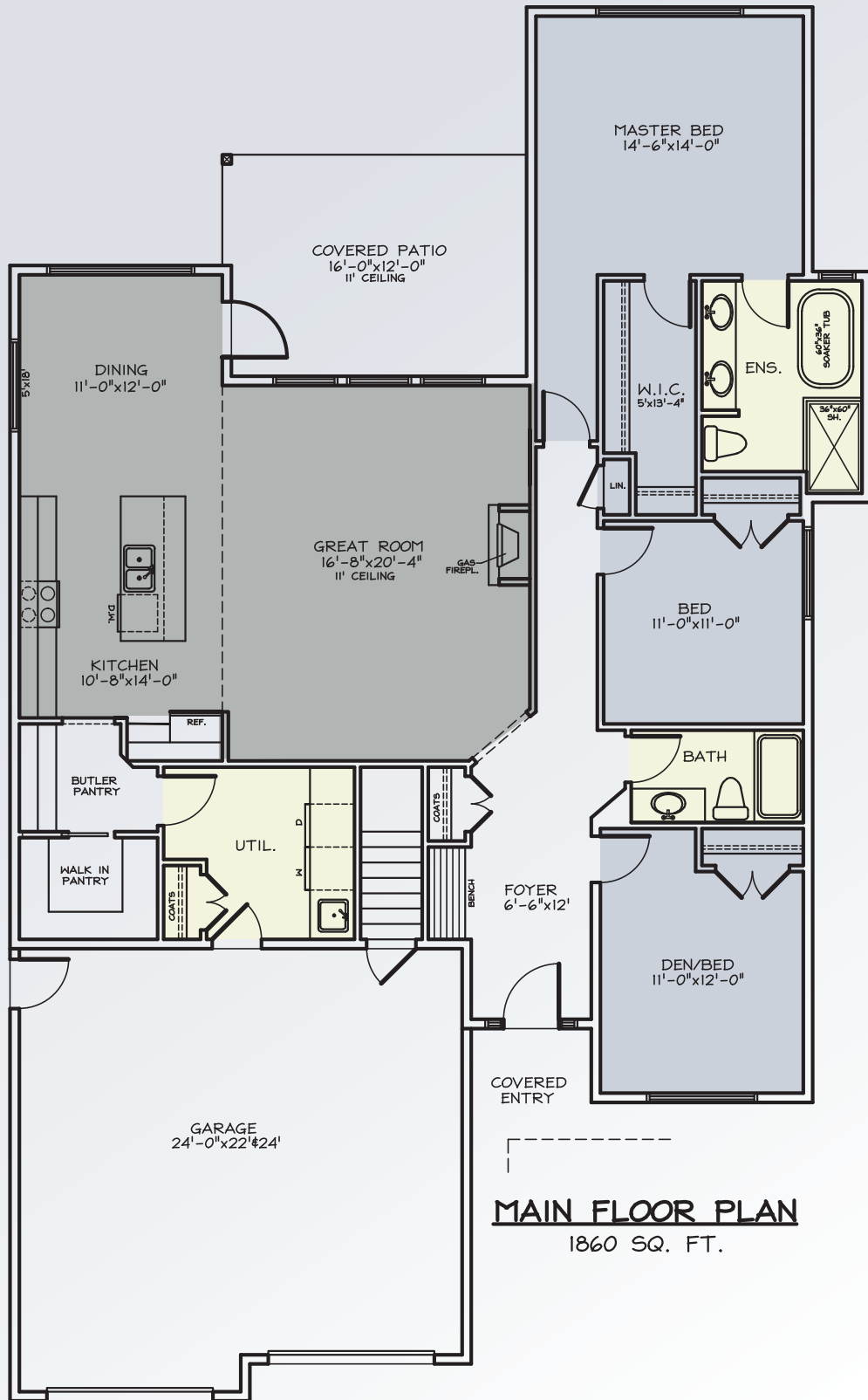
This home will be an incredible 1860 sq. ft. rancher in The Rise within Crown Isle. This well thought out plan will have everything you need with 3 bedrooms, 2 full baths, large great room, a butler's pantry and all the quality finishing that Integra is known for: hardwood floors, quartz countertops, and a custom kitchen. Outside will feature Hardie siding, stone and timber accents.

Call us today & we will help you choose your interior finishes.

BILL LARSON

c. 250.331.1877
o. 250.338.6318

info@integrahomescv.ca
integrahomescv.ca



MAIN FLOOR PLAN
1860 SQ. FT.



BILL LARSON

c. 250.331.1877
o. 250.338.6318

info@integrahomescv.ca
integrahomescv.ca