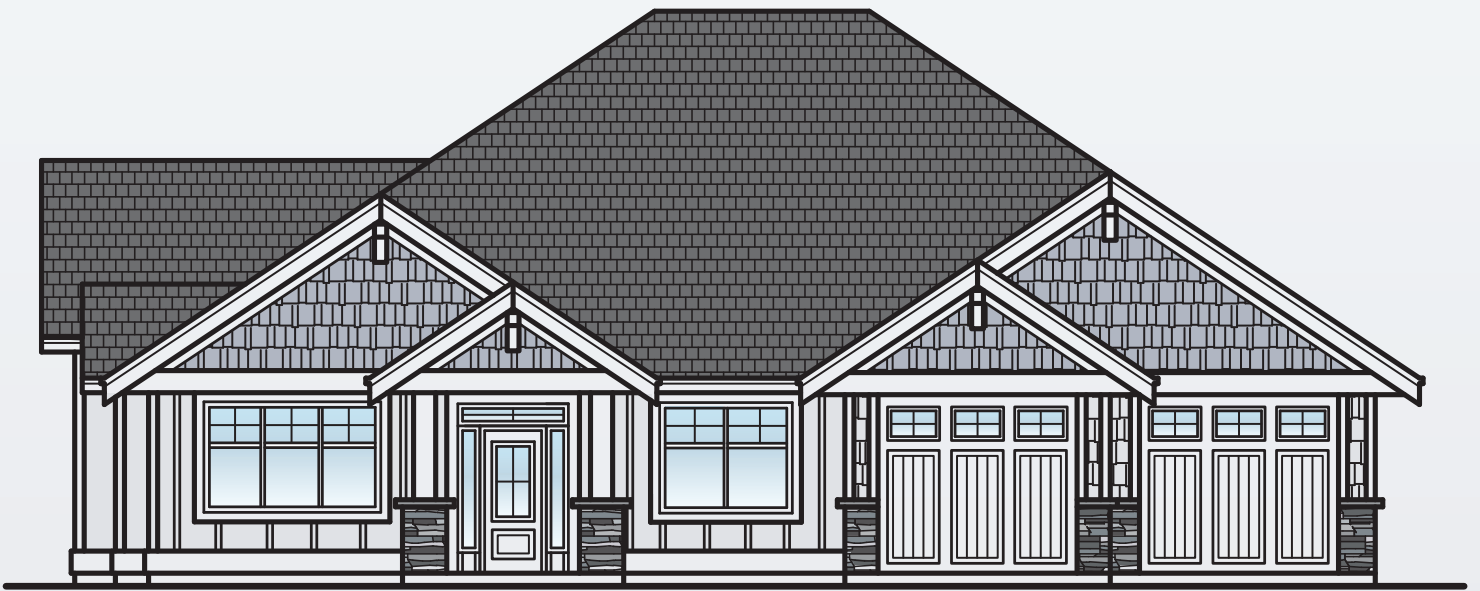


INTEGRA

H O M E S

QUALITY HOMES, BUILT ON TRUST.



2040 NORFOLK WAY

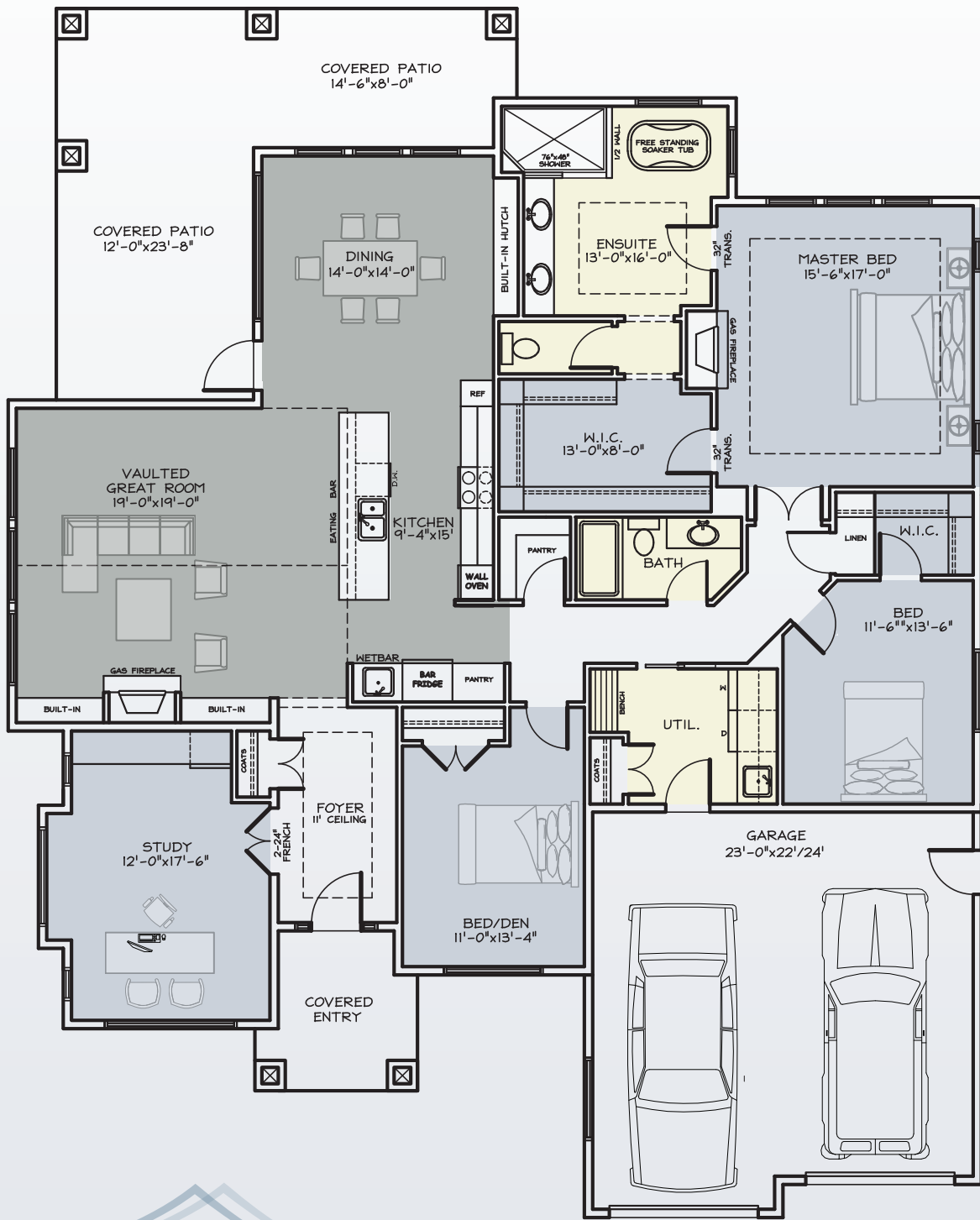
This home will be an incredible 2467 sq. ft. rancher home in the new Cambridge Estates, a community within Crown Isle. This well thought out plan will have everything you need with 3 bedrooms, 2 full baths, plus a study, large great room and all the quality finishing that Integra is known for: hardwood floors, quartz countertops, and a custom kitchen. Outside will feature Hardie siding, stone and timber accents.

Call us today & we will help you choose your interior finishes.

C . 2 5 0 . 3 3 1 . 1 8 7 7

O . 2 5 0 . 3 3 8 . 6 3 1 8

BILL@INTEGRAHOMESCV.CA | WWW.INTEGRAHOMESCV.CA



MAIN FLOOR PLAN
2467 SQ. FT.



C. 250.331.1877

O. 250.338.6318

BILL@INTEGRAHOMESCV.CA | WWW.INTEGRAHOMESCV.CA